



CLIMATE AND ENERGY ACTION PLAN



7 AFFORDABLE AND
CLEAN ENERGY



12 RESPONSIBLE
CONSUMPTION
AND PRODUCTION



13 CLIMATE
ACTION



Climate and Energy Action Plan

Overview

Principal components of the plan are:

To generate momentum, short- and medium-term goals to be set:

- 15% by 2025
- 30% by 2030.

- A long-term plan outlining the kinds of adjustments required to become carbon neutral and boost energy efficiency

- Concrete steps that can be taken to accomplish short-term goals and lay the groundwork for long-term success

- Methodology review

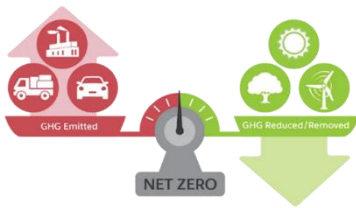
How to achieve Carbon Neutrality

There is no magic solution to cut emissions across the campus. A complex strategy that is a part of a long-term roadmap is described below:

- Net neutral growth is accomplished by enforcing strict energy efficiency standards for all new construction and significant renovations;
- Prioritization, funding, monitoring, transparency, and capacity systems are in place to support carbon neutrality;

- Energy Efficiency strategies, such as behavior modification, scheduling, envelope improvements, recommissioning and environmental monitoring, and lighting and equipment updates, minimize the energy demand from existing buildings;
- Through fleet optimization and quick uptake of low-carbon cars, TSUULL's fleet is decarbonized;
- As part of rejuvenation, centralized infrastructure is appropriately sized according to the decreased energy consumption, including the conversion of steam to hot water;
- efficient heat recovery completely manages simultaneous heating and cooling of district thermal energy between buildings;
- On campus, low-carbon energy sources like geothermal and renewable energy are used;
- In addition, there is a decrease in non-energy/indirect emissions from trash, business travel, commuting, and embodied carbon;
- Other emissions are compensated for or sequestered;

CARBON NEUTRALITY AND ENERGY EFFICIENCY PROCESS PLAN



1. Net-Zero Growth strategies



2. Aligning



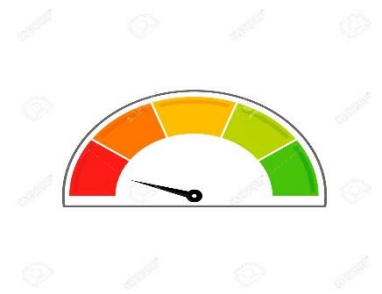
3. Energy Efficiency



4. Low Carbon Vehicles Heat Recovery



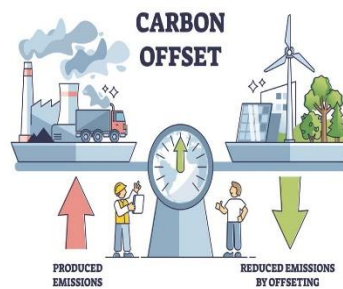
5. Centralized Infrastructure renewal



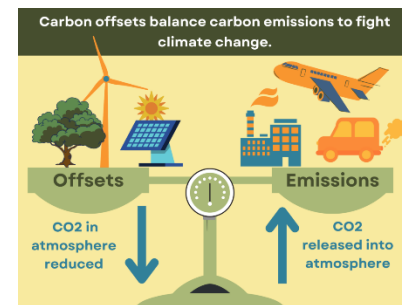
6. Efficient



7. Low Carbon Energy Emissions Reduction



8. Carbon Offsets



9. Non-Energy

Progress

A progress report on TSUULL will be included in the yearly Environmental Sustainability Report. Additionally, TSUULL makes available a thorough

breakdown of its annual emissions as well as the steps it has taken to cut emissions and boost energy efficiency.

Being carbon neutral entails:

- reducing actual emissions as much as possible and,
- to address the remaining emissions, purchasing credits that promote emissions reductions outside the campus.
- Reforestation, agricultural management, renewable energy, and carbon capture initiatives are a few examples of offsets.

Head of Sustainability Practices Office

Jamoliddin Khaltaev

Jamoliddin Khaltaev